

colour
everything



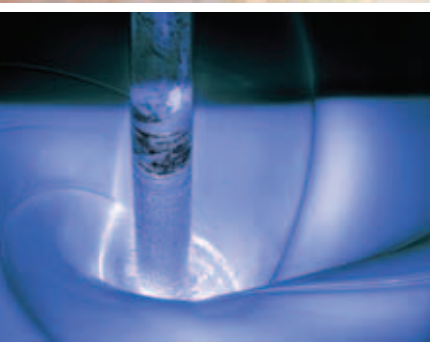
Multisperse



Aqueous in-plant colourant.

For in-plant aqueous emulsion paint (interior and exterior), acrylic emulsion based distemper, dry distemper, cement paints, aqueous enamels for interior and exterior.

For artist colours, rubber latex, aqueous foams, paper coating adhesives, chalks, wood finishes, detergents and water based inks.



liquid colours 


www.liquidcolours.co.za



Multisperse Colour Chart

Colour	Light Fastness	Weather Resistance	Rel. col.	Pig. content	Alkaline	Lime	Density
Part I	1 - 8	1 - 5	Intensity	ca.%			
Part II	ST1/25	ST1/25					
Yellow PP45G	7	5	16	35	5	5	1.2
Yellow 74	5 - 6	4 - 5					
Yellow PP4	5 - 6	4 - 5	50	43	4 - 5	5	1.3
Yellow 3	4 - 5	3 - 4					
Yellow SPV55	4 - 5	3 - 4	8	42	5	5	1.2
Yellow 13	2 - 3	2 - 3					
Yellow PP2A	5 - 6	3 - 4	16	40	4 - 5	5	1.15
Yellow 1	4 - 5	2 - 3					
Green PP4	8	5	19.5	55	5	5	1.45
Green 7	8	5					
Black PP1	8	5	12.5	35	5	5	1.3
Black 7	8	5					
Yellow Oxide PP920	8	5	90	43	5	5	1.9
Yellow 42	8	5					
Red Oxide PP130	8	5	65	50	5	5	2.1
Red 101	8	5					
Red PP3A	6 - 7	4	16.5	36	4	4 - 5	1.2
Red 112	4 - 5	3					
Violet RLS	8	5	10.5	25	5	5	1.15
Violet 23	7 - 8	4 - 5					
*Blue RS8	8	4	10	50	5	5	1.3
Blue 29	7	3					
Blue PP2A	8	5	10	54	5	5	1.3
Blue 15.1	8	4 - 5					
White PP1	8	5	-	50	5	5	1.7
White 6	8	5					

*Blue RS8 is not resistant to acids.

Actual shades may differ due to use of various substrates and printing techniques.
Please contact us for original colour charts.