

colour  
everything



# Unisolve

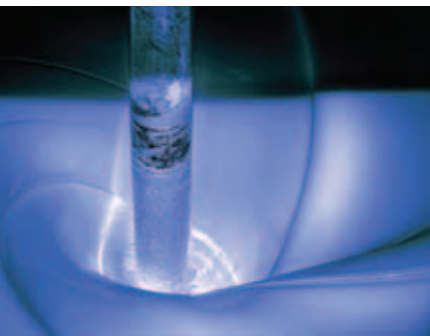


Universal Industrial Colourants for all Solvent based systems.

Unisolves are a range of colourants engineered to be compatible with a wide range of Industrial Paint Systems, including Short Oil Alkyds, Modified Alkyds, Epoxies, Polyurethanes, Nitrocellulose and Chlorinated Rubbers. Unisolves have a high pigment loading to ensure economy of use and addition of a minimum of foreign ingredients.

Unisolves are designed to be compatible independent of the method of incorporation. No rub up or seeding is evident whether the colourants are incorporated by roto mixing or high speed stirring.

In the past paint manufacturers have generally tinted their range of Industrial Paints with in-house colourants, made specifically for an individual product. An additional saving in the use of Unisolves is mill availability by not having to produce this wide range of in-house tinters. The use of Unisolves in a wide range of industrial systems results in significant savings in pigment stock holdings.



**liquid colours** 



[www.liquidcolours.co.za](http://www.liquidcolours.co.za)



# Unisolve Colour Chart



	Colour Index	Light Fastness	Weather Resistance	Pig. Content	Density
	Part I	1 - 8	1 - 5	ca.%	
	Part II	ST1/25	ST1/25		
	PB Lemon Chrome SP10A	7	4 - 5	70	1.9 - 2.1
	Yellow 34	6	3 - 4		
	PB Middle Chrome SP11A	7	3 - 4	70	2.2 - 2.4
	Yellow 34	6	2 - 3		
	PB Scarlet Chrome SP12A	7	3 - 4	80	2.6 - 2.8
	Red 104	6	3		
	Green SP4A	8	5	28	1.0 - 1.2
	Green 7	8	5		
	Chrome Oxide Green SP13A	8	5	70	2.4 - 2.6
	Green 17	7	4		
	Unisolve Black SP1A	8	5	34	1.0 - 1.2
	Black 7	8	5		
	Yellow Oxide SP5A	8	5	63	1.7 - 1.9
	Yellow 42	8	5		
	Red Oxide SP7A	8	5	70	1.8 - 2.0
	Red 101	8	5		
	Maroon Oxide SP8A	8	5	70	1.9 - 2.1
	Red 101	8	5		
	Red SP3A	7	4	30	1.0 - 1.2
	Red 48.4	5	3		
	Violet SP9A	8	5	20	0.9 - 1.1
	Violet 23	7 - 8	4 - 5		
	*Ultramarine Blue SP14A	7	4	70	1.6 - 1.8
	Blue 29	8	3		
	Blue SP2A	8	5	30	1.0 - 1.2
	Blue 15.2	8	4 - 5		
	Magenta SP16A	7	5	16	0.9 - 1.1
	Violet 19	7	4 - 5		
	Red SP15A	6	4	40	1.0 - 1.2
	Red 48.4	5 - 6	4		
	White SP16A	-	-	75	2.0 - 2.2
	White 6				

\*Ultramarine Blue SP14A is not resistant to acids.  
 PB Denotes product containing lead.

Actual shades may differ due to use of various substrates and printing techniques.  
 Please contact us for original colour charts.

